



**TAB WPC**



**CONTACT US NOW**

**Hebei Moyo Technologies Co.,Ltd**



**TEL:+86-137-31131359**

Phone Number



**E-mail: admin@flooringmanufacture.com**

E-mail



**www.flooringmanufacture.com**

Website



**No.67,Qilian Street,Shijiazhuang,Hebei,China,**

Address

**Hebei Moyo Technologies Co.,Ltd**



**WPC DECKING**



**WPC WALL CLADDING**



# CONTENTS

## TAB WPC DECKING SERIES

---

- 01-02** ——— TAB WPC PRODUCTS FEATURES
- 03-04** ——— TAB WPC DECKING SERIES

- 
- 05-06** ——— SUPER 3D EMBOSSED WPC DECKING SERIES
  - 07-08** ——— CO-EXTRUSION WPC DECKING SERIES
  - 09** ——— WPC DECKING INSTALLATION

## TAB WPC FENCING

---

- 10-11** ——— WPC FENCING SERIES
- 12** ——— WPC FENCING INSTALLATION

## TAB WPC CLADDING SERIES







---

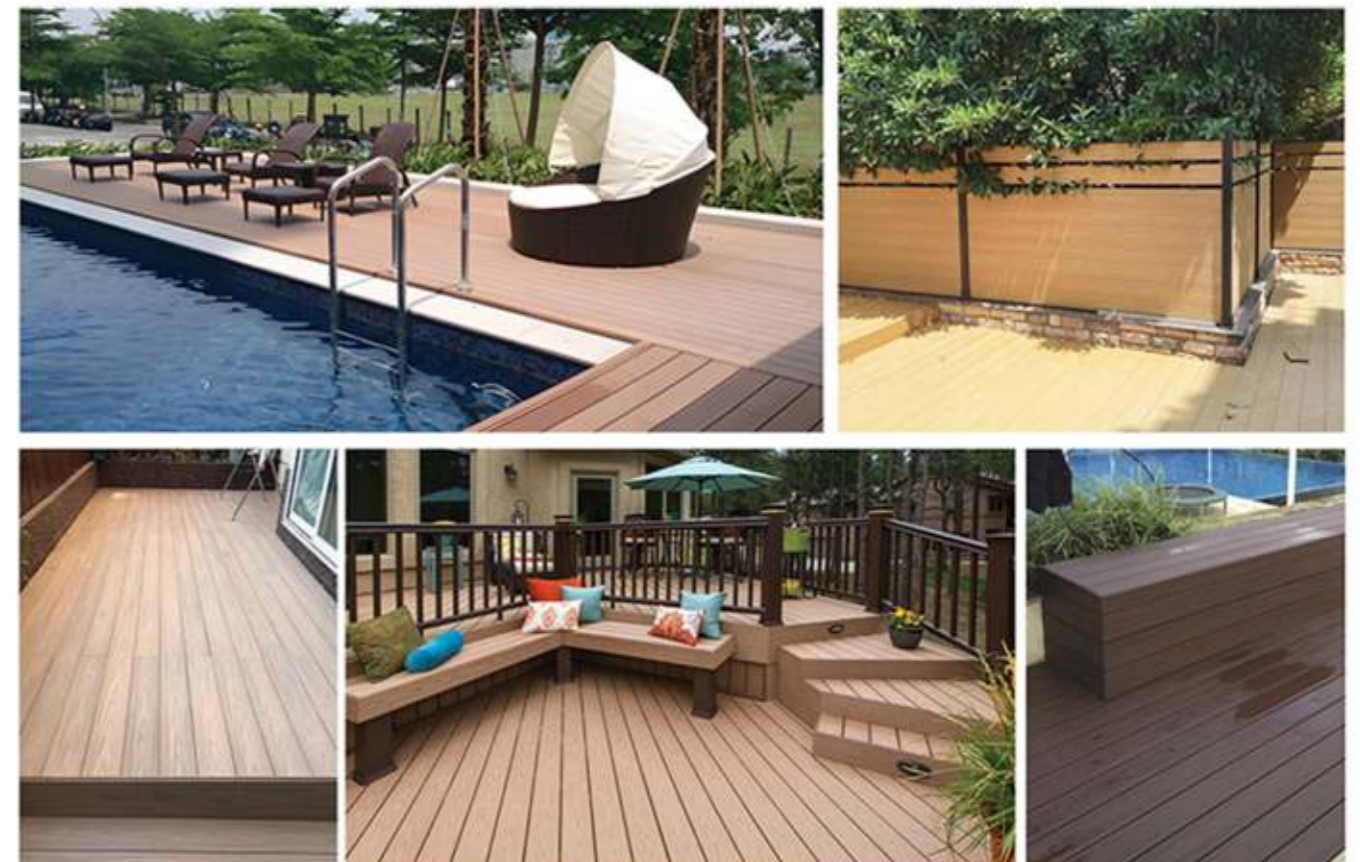
- 13-14** ——— WPC CLADDING SERIES
- 15-16** ——— WPC 3D CLADDING SERIES
- 17-18** ——— CO-EXTRUSION WPC CLADDING SERIES
- 19-20** ——— CO-EXTRUSION WPC L ANGLE



# PRODUCT FEATURES

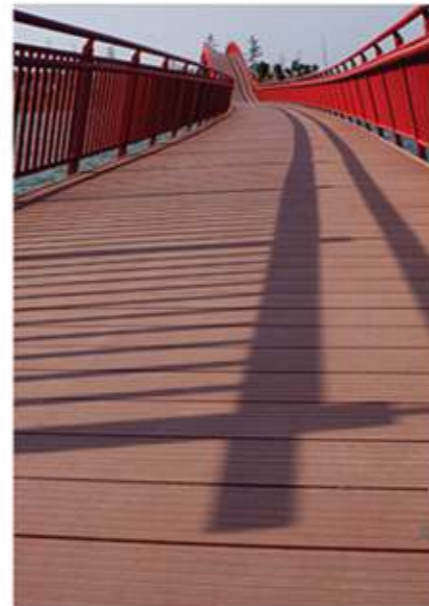
WPC products are man-made materials and produced by plastics, wood fibers and some additives. Compared with wood, WPC products have some obvious advantages.

-  Recycled and Eco-friendly and sustainable
-  Natural wood grain texture and touch
-  Water proof, anti-corrosive, anti-insec
-  No painting, no glue, low maintenance
-  Installed easily with accessories
-  Adapt to different environments



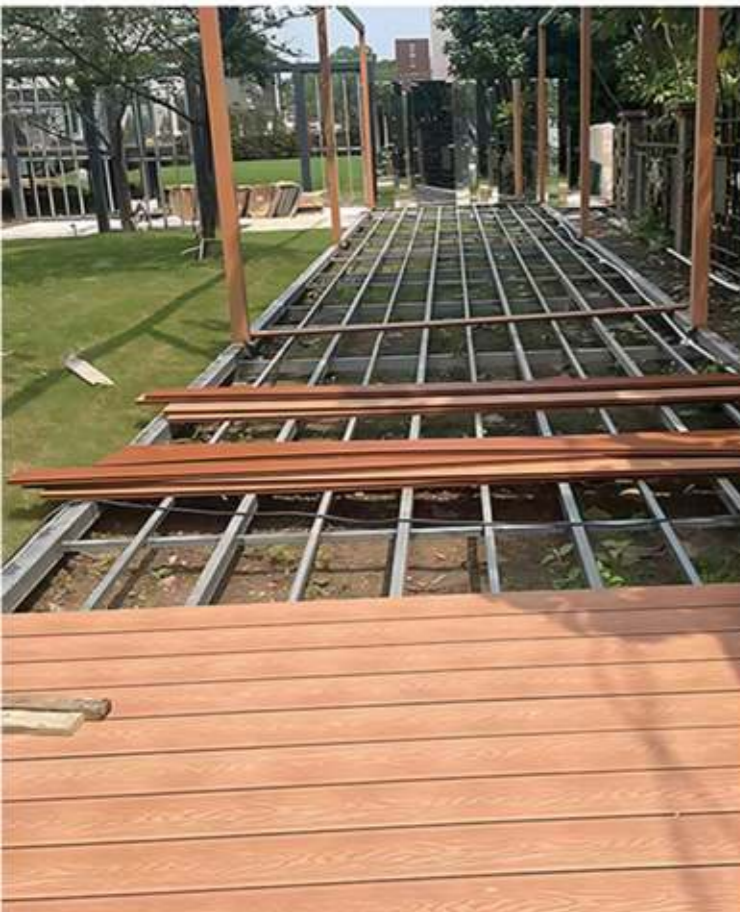
# TAB WPC DECKING SERIES

TAB decking represents a revolutionary alternative to traditional wood decking materials. It's crafted from a blend of wood fibers and recycled plastics, engineered to provide the aesthetic appeal of natural wood while offering superior durability and resistance to the elements. With its low maintenance requirements, environmental sustainability, and versatility in design, WPC decking has become a preferred choice for outdoor spaces, offering a perfect balance of aesthetics and functionality.



# SUPER 3D EMBOSSED WPC DECKING SERIES

It is processed with exquisite craftsmanship that makes traditional wood plastic composite decking more natural and improves the performances such as anti-slip, wear-resistant etc.



## 3D Embossed WPC Decking



Item No:KN-DS0-132-20A  
Dimension:132\*20mm



Item No:KN-DS0-150-25A  
Dimension:150\*25mm



Item No:KN-DY6-140-23A  
Dimension:140\*23mm



Item No:KN-DY6-140-25A  
Dimension:140\*25mm



Item No:KN-DY7-150-25A  
Dimension:150\*25mm

### Pattern and Color Selection

All can be customized according to your requirements



Dark Coffee    Black    Grey    Burma teak    Light Coffee    Red

# CO-EXTRUSION WPC DECKING SERIES

CO-Extrusion decking is the second generation of WPC produced by advanced technology and unique formula. The co-extrusion is covered with protective layer of polymer material around that makes composite decking more durable and recyclable.



## CO-Extrusion WPC Decking Series



Item No:KN-DS0-153-25C  
Dimension:153\*25mm



Item No:KN-DS0-153-25B  
Dimension:153\*25mm

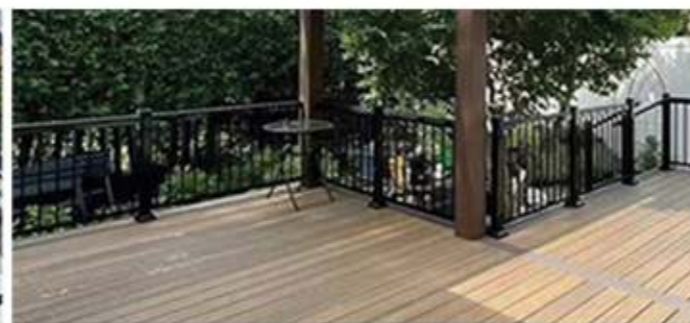


Item No:KN-DY6-140-23B  
Dimension:140\*23mm

## Optional colors







Ash Carbon Forest Full city Ivory Mist Mocha



## INSTALLATION ACCESSORIES

WPC decking accessories not only improve the structural stability and appearance of a deck but also make installation easier, enhance safety, and ultimately increase the deck's lifespan and value.

 <p>Plastic Clip &amp; Stainless Screw</p>	 <p>Stainless Steel Clip &amp; Screw</p>	 <p>WPC Solid Joist 40mm-25mm</p>
 <p>WPC Decking Edge Trim 70mm-10mm</p>	 <p>Traditional WPC L Angle CO-Extrusion Trim 50mm-50mm</p>	 <p>Traditional WPC L Angle Trim 50mm-50mm</p>

# WPC DECKING INSTALLATION



1. Lay joists parallel to each other with a spacing of 25-40cm between them, depending on the manufacturer's recommendations. Fix the joists to the ground using expansion screws.



2. Align the first board with the starter clips and secure it in place. Ensure the board is straight.



3. Secure the clips to the joists with screws.



4. Slide the next board into the clips. (Leave a 5-6mm gap between boards for thermal expansion )



5. Install all boards following the steps above.



6. Attach edge trims or skirting boards to the perimeter of the decking to hide the subframe and create a finished look.

## Maintenance Tips

1. Regular Cleaning: sweep debris and clean with mild soap and water
2. Avoid Harsh cleaners: Do not use abrasive cleaning tools or strong chemicals
3. Inspect Regularly: Check for loose screws or clips and re-tighten if needed



1. Make sure 10mm gaps to the wall for expansion or contraction
2. Please contact us before installation because there are some differences in the construction environment of each customer



# WPC FENCING SERIES

WPC (Wood-Plastic Composite) fencing is a type of fencing made from a mix of wood fibers and plastic, often used as an alternative to traditional wood or vinyl fences. Wpc fencing combines the natural look and feel of wood with the durability and low-maintenance qualities of plastic, making it a popular choice for outdoor applications.

WPC fencing is commonly used for residential property boundaries, privacy fencing, garden fencing, and commercial applications, providing a long-lasting, attractive, and eco-friendly fencing solution.



WPC Full-Trellis Fence



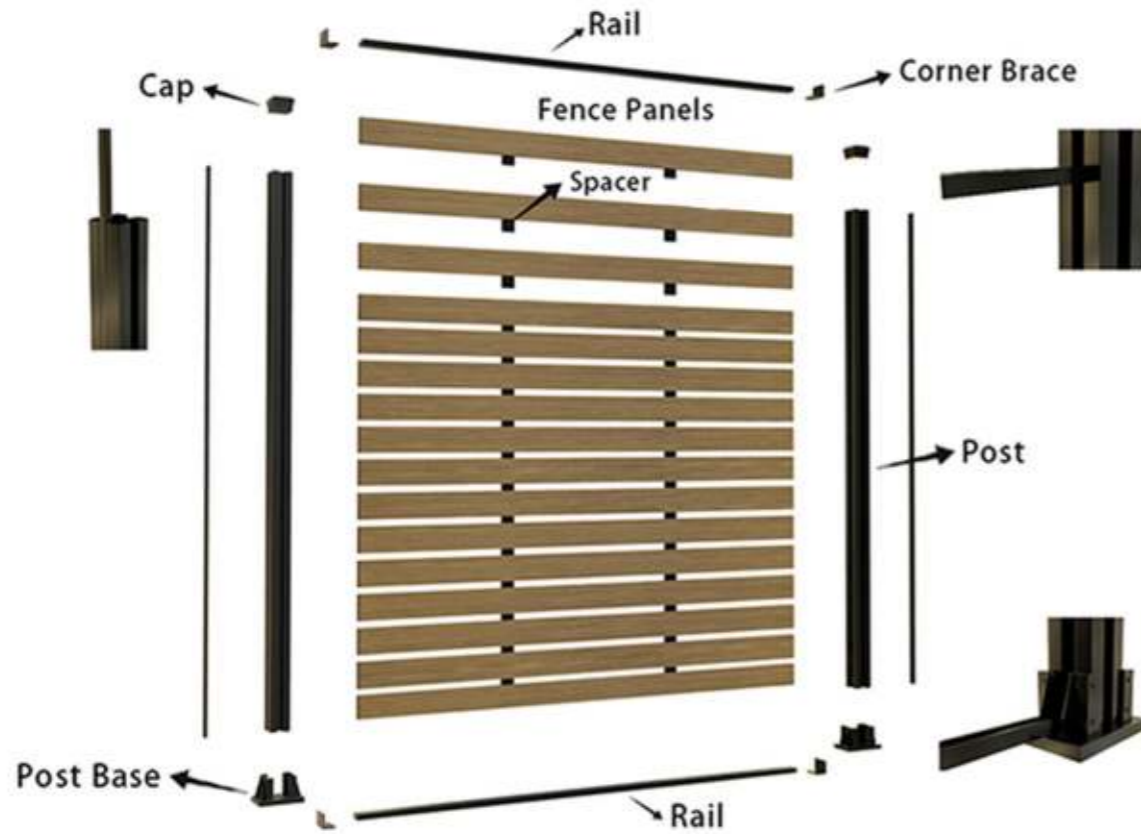
WPC Mid-Trellis Fence



WPC Privacy Fence

# WPC FENCING SERIES

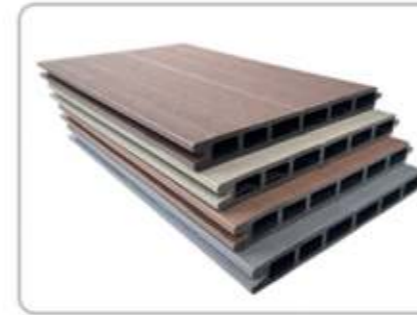
## DISASSEMBLE THE DRAWING



## ACCESSORIES



# WPC FENCING PRODUCTS



Item No:KN-Q6-206-20B  
Dimension:206\*20mm



Item No:KN-A-100100B  
Dimension:100\*100mm

## WPC FENCING INSTALLATION

**STEP 01** Confirm the location of steel holder. Drill a hole of 500 mm depth. Put the post holders into holes. Backfill with concrete for stability. Use expansion screws to fix the post holder on the cementground.

**STEP 02** Fix aluminum post with post base. Fix post base with self drilling screws.

**STEP 03** Put the corner braces into rail. Put rail into post groove with drilling screws.

**STEP 04** Slide the panels from top to bottom one by one.

**STEP 05** Put two spacers on the panels.

**STEP 06** Put the corner braces into rail. combine the corner braces with panels tightly. Use self drilling screws to fix the rail on the aluminum posts.

**STEP 07** Put the side covers on the post grooves.

**STEP 08** Put the caps on the top of posts. Installation is complete.



## TAB WPC CLADDING SERIES

TAB WPC manufactures and provides different types of exterior cladding including traditional WPC cladding and co-extrusion WPC cladding. One of economical and environmentally friendly solutions for your exterior wall cladding decoration is choosing TAB WPC cladding. Our company provides customized services for WPC wall claddings, such as color, length and molds, to meet the different needs of customers.



# TRADITIONAL WPC CLADDING SERIES

WPC composite wall claddings look like a real wood surface. But compared with wood claddings, WPC composite wall claddings are produced with obvious advantages like eco-friendly, anti-rot, waterproof, low maintenance, available in a wide range of colors.



Item No:KN-W4-220-26A  
Dimension:220\*26mm



Dark Coffee    Black    Grey    Burma teak    Light Coffee    Red



# SUPER 3D EMBOSSED WPC CLADDING SERIES

3D embossed processing technique makes claddings to have 3D effect that provides a more realistic wood grain appearance.



Item No:KN-W0-148-21A  
Dimension:148\*21mm

# CO-EXTRUSION WALL PANELS SERIES



Item No:KN-W4-220-26B  
Dimension:220\*26mm



Item No:KN-W3-173.5-27B  
Dimension:173.5\*27mm



Ash Carbon Forest Full city Ivory Mist Mocha

# INSTALLATION ACCESSORIES



## TRADITIONAL WPC L ANGLE TRIM/SIDE COVER

WPC L angle trim is a kind of practical corner decoration, which can achieve safe and beautiful effects when combined with your wall panels or cladding. It only needs simple fixation with screws. The colors also can be customized.



Item No:KN-A-5050A  
Dimension:50\*50mm  
Color: red



Item No:KN-A-5050A  
Dimension:50\*50mm  
Color: dark coffee



Item No:KN-A-5050A  
Dimension:50\*50mm  
Color: Burma teak



Traditional WPC  
Corner Edges

# CO-EXTRUSION WPC L ANGLE TRIM/SIDE COVER



Item No:KN-A-5050B  
Dimension:50\*50mm  
Color: Mist



Item No:KN-A-5050B  
Dimension:50\*50mm  
Color: Mocha



Item No:KN-A-5050B  
Dimension:50\*50mm  
Color: Full city



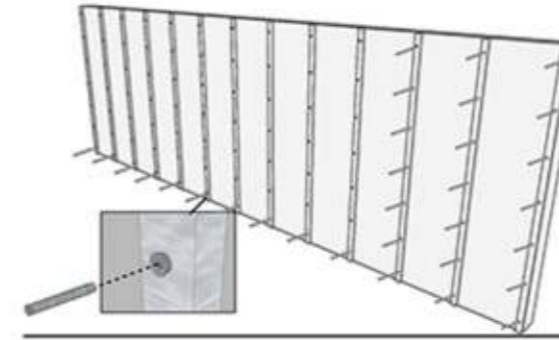
Co-extrusion WPC  
Corner Edges

# STAINLESS STEEL CLIP & SCREW



Item No:KN-JSKK  
Dimension:40\*22\*12mm

# WPC WALL CLADDING INSTALLATION



STEP 01

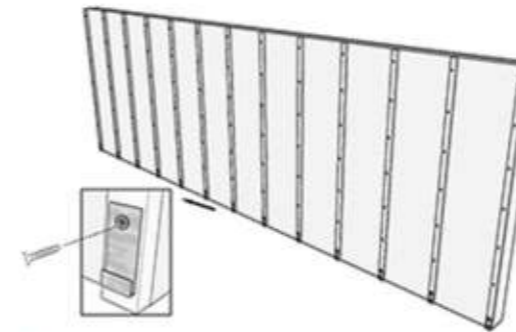
Measure the area carefully to determine the amount of cladding needed, cut the panels to the required size using a saw if necessary. Fix the aluminum joists on the wall with screws. The recommended distance between the aluminum joists is 600mm

STEP 02

Install a starter strip at the bottom of the wall to support the first row of panels. Use screws or nails to secure it in place. The first row clips are 5mm from the ground

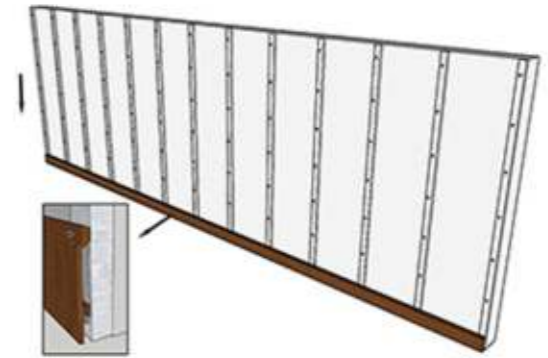
STEP 03

Install the first wall cladding on the aluminum joists with screws



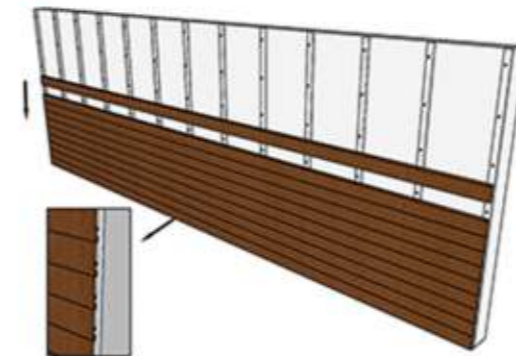
STEP 04

Install the wpc wall panels one by one



STEP 05

All the WPC wall panels are installed.



STEP 06

Install finishing trims around the edges and corners to give the installation a polished look. Secure the trims with adhesive or screws

STEP 07

The WPC wall panel installation is completely finished.

